

# deffner & Johann

Supplies for RESTORATION | CONSERVATION | ART HANDLING – SINCE 1880

## INSTALLATION AND OPERATING INSTRUCTIONS

[info@deffner-johann.de](mailto:info@deffner-johann.de) | +49 9723 9350-0

Die in diesem Produktdatenblatt genannten Spezifikationen dienen nur zur Produktbeschreibung und beziehen sich auf den Zeitpunkt unmittelbar nach der Produktion bzw. Import des Produktes. Sie entsprechen den Angaben des Herstellers. Eine rechtsverbindliche Zusicherung bestimmter Eigenschaften oder der Eignung für einen bestimmten Einsatzzweck kann hieraus nicht abgeleitet werden. Durch unsachgemäßen Transport und / oder unsachgemäße Lagerung können sich Änderungen ergeben. Die Angaben in diesem Produktdatenblatt entbinden den Verarbeiter nicht von eigener Prüfung der Eigenschaften des Produktes und dessen Eignung für die vorgesehene Verwendung.

## General Uses

Gardening, spraying disinfectants & pesticides.

## Sprayer Parts

● Can be removed easily for pouring liquid

● Can be adjusted to change the mist size  
*Nozzle*

● See-through tank

*Pump*

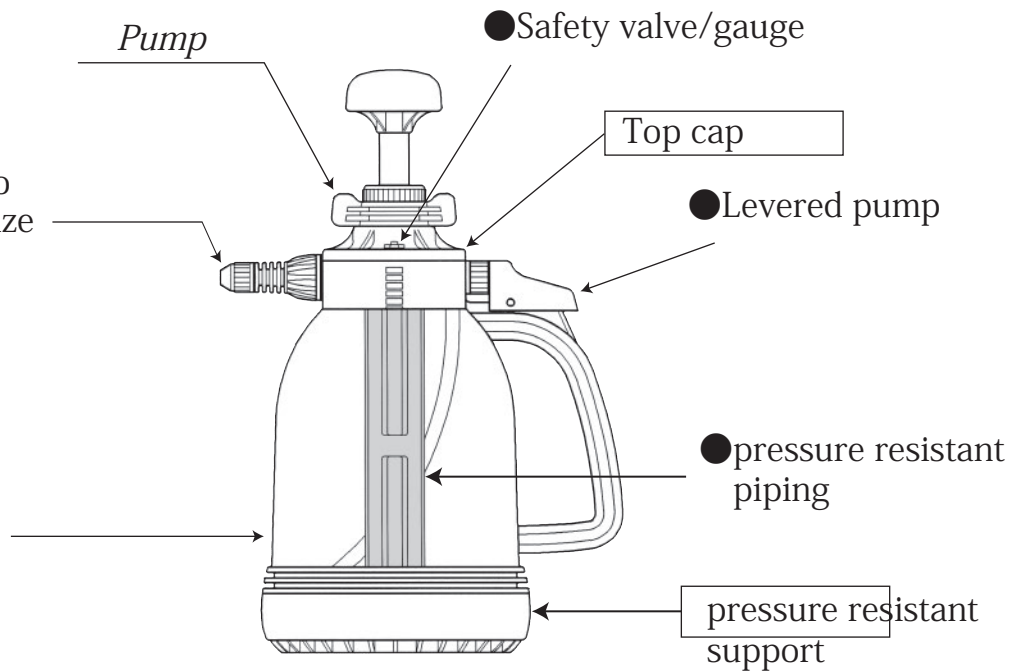
● Safety valve/gauge

Top cap

● Levered pump

● pressure resistant piping

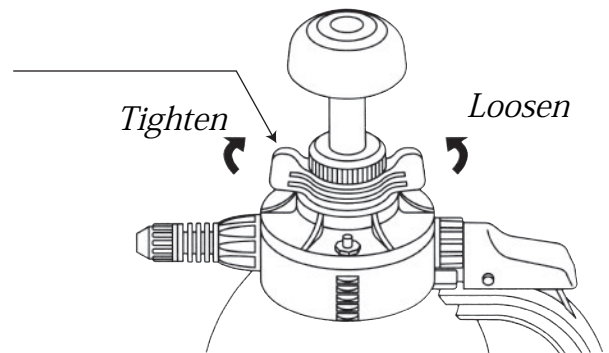
pressure resistant support



## How to Use

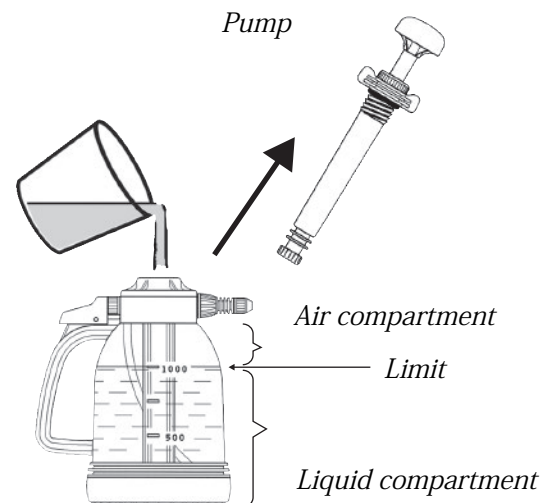
**1** Turn the pump handle counter-clockwise, and remove from sprayer

• Turn the winged area



**2** Pour liquid into tank

- Only fill the sprayer up to the 1 liter mark
- If you are using chemicals, follow the required dilution levels.
- If you are using a powder based material, make sure the solution is well mixed beforehand.



### 3 Replace the pump, turning it clockwise.

- Be sure to tighten, so there is no leakage of air or liquid.

### 4 Holding the top end of the pump, start pressurizing the sprayer

- Once pressurizing starts, the yellow safety gauge will pop up.

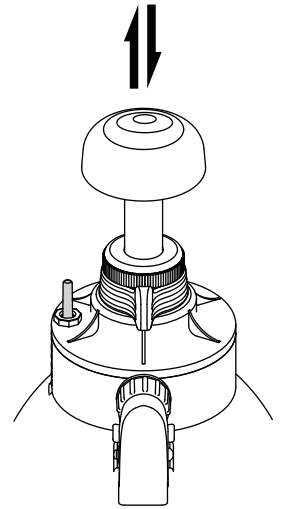
*When the pressure reaches 330 k Pa, valve will open and release air.*

*Stop pumping when this happens.*

*- With 1 liter of liquid, the valve will open after approximately 20 pumps*

*- 0.75 liters --> 42 pumps*

*- 0.5 liters --> 65 pumps*

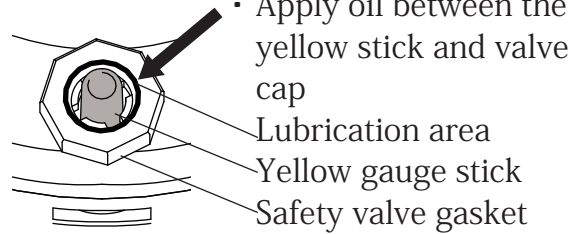


## <Troubleshooting the safety valve>

Apply oil to the gauge stick (yellow)

※Any oil can be used, but avoid organic solvents

- Replace safety valve gasket if lubrication does not work



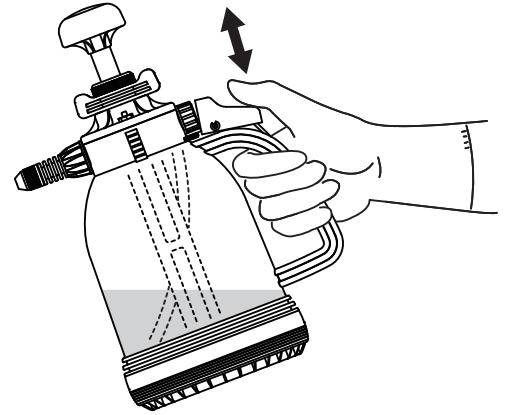
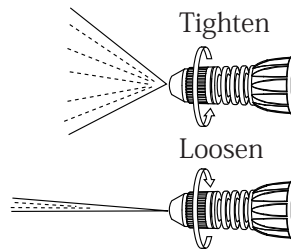
※To replace: go to Page 6 "Taking apart your sprayer"

## 5 Spraying

- Hold down the lever to spray, release to stop
- Hold the sprayer at an angle (image) to use up the liquid

### < Adjusting the spray angles >

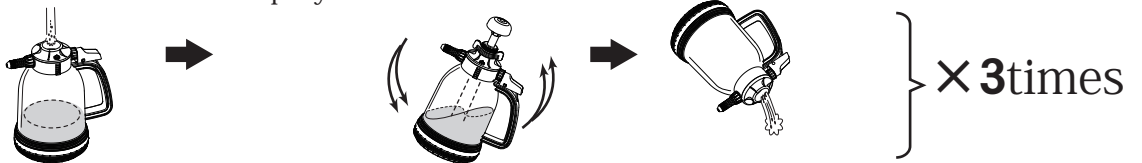
- Tightening the nozzle will create a finer & wider mist.
- Loosening the nozzle will create a rougher & narrow mist, and further loosening will create a direct/straight mist



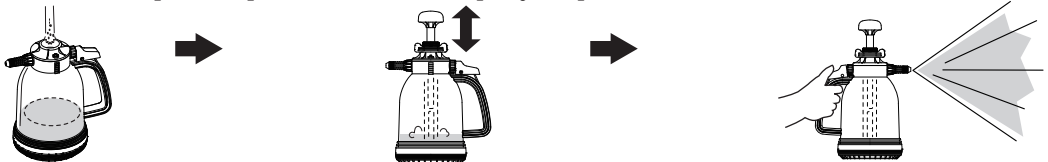
### Aftercare

※Always clean the sprayer after each use.

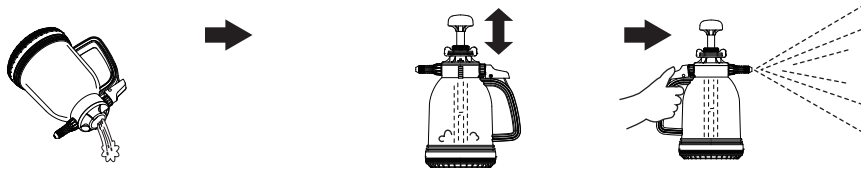
① Using tap water, clean the inside of the sprayer.



② To clean the piping and nozzle, pour tap water into the sprayer, pressurize, and mist for 1 minute.



③ Empty out the sprayer and pressurize again, to spray out the remaining liquid in the pathway



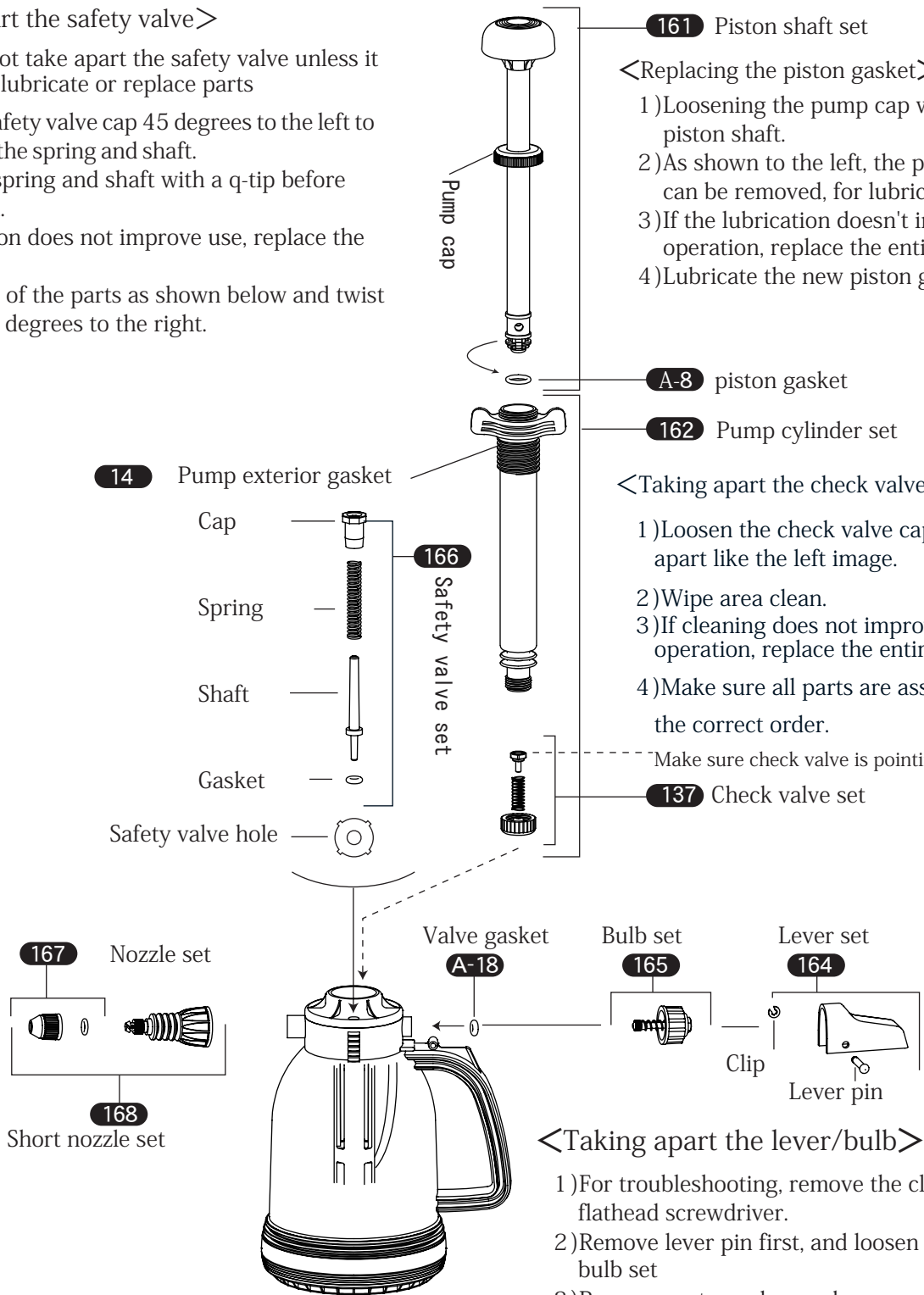
# Sprayer Parts/Troubleshooting

## <Taking apart the safety valve>



Do not take apart the safety valve unless it is to lubricate or replace parts

- 1) Turn the safety valve cap 45 degrees to the left to take apart the spring and shaft.
- 2) Clean the spring and shaft with a q-tip before lubrication.
- 3) If lubrication does not improve use, replace the set. (166)
- 4) Replace all of the parts as shown below and twist the cap 45 degrees to the right.



## <Replacing the piston gasket>

- 1) Loosening the pump cap will release the piston shaft.
- 2) As shown to the left, the piston gasket can be removed, for lubrication.
- 3) If the lubrication doesn't improve operation, replace the entire set (162)
- 4) Lubricate the new piston gasket well.

## <Taking apart the check valve>

- 1) Loosen the check valve cap and take apart like the left image.
- 2) Wipe area clean.
- 3) If cleaning does not improve the operation, replace the entire set. (137)
- 4) Make sure all parts are assembled in the correct order.

Make sure check valve is pointing down

## <Taking apart the lever/bulb>

- 1) For troubleshooting, remove the clip using a flathead screwdriver.
- 2) Remove lever pin first, and loosen the cap of the bulb set
- 3) Remove parts as shown above.